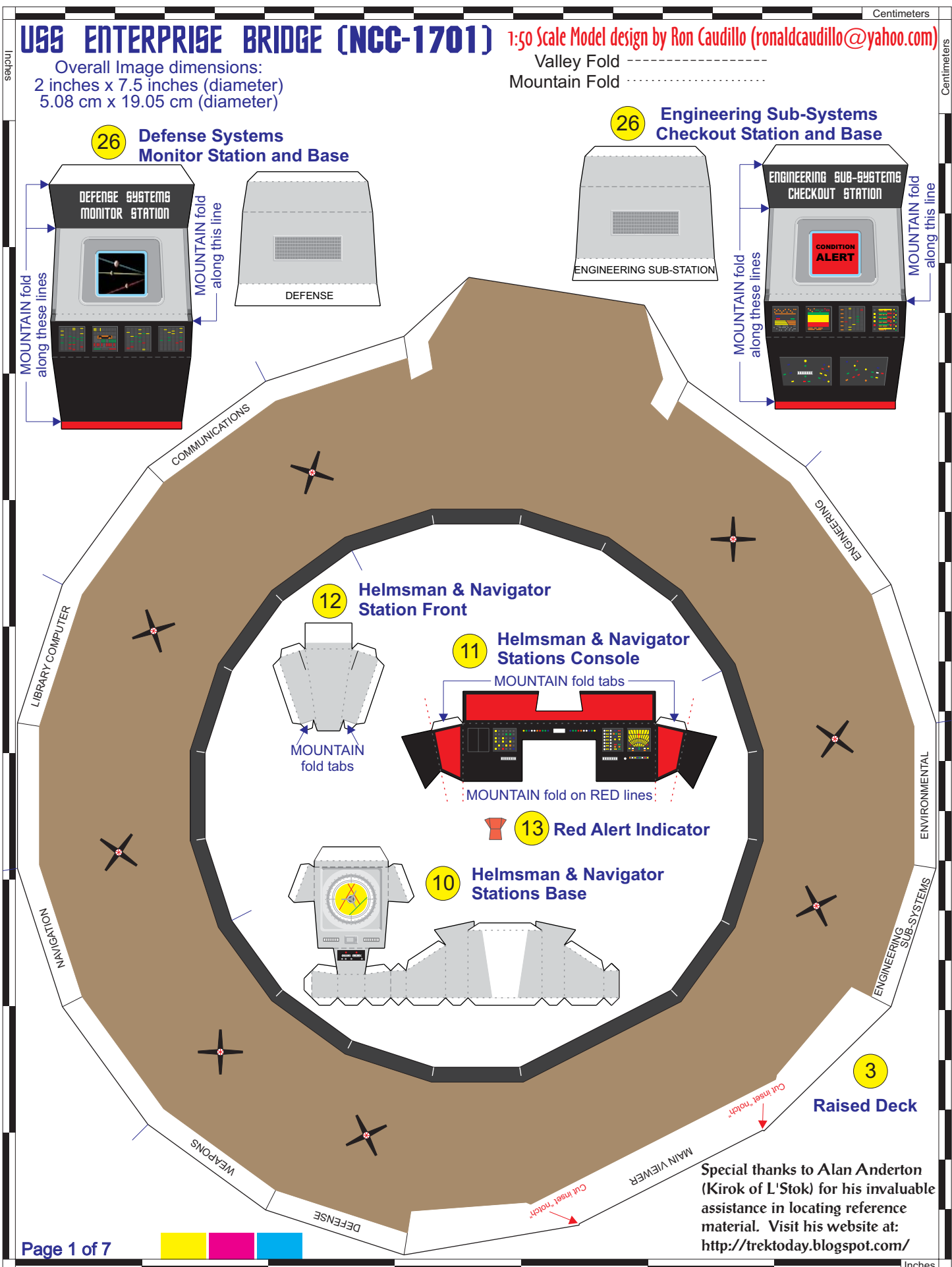


USS ENTERPRISE BRIDGE (NCC-1701)

1:50 Scale Model design by Ron Caudillo (ronalddcaudillo@yahoo.com)

Overall Image dimensions:
2 inches x 7.5 inches (diameter)
5.08 cm x 19.05 cm (diameter)

Valley Fold -----
Mountain Fold



Special thanks to Alan Anderton (Kirok of L'Stok) for his invaluable assistance in locating reference material. Visit his website at: <http://trektoday.blogspot.com/>

USS ENTERPRISE BRIDGE (NCC-1701)

1:50 Scale Model design by Ron Caudillo (ronaldcaudillo@yahoo.com)

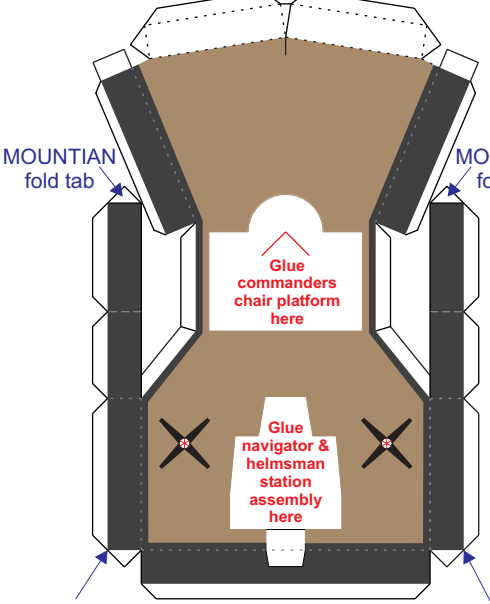
Valley Fold
Mountain Fold

Centimeters

Inches

Centimeters

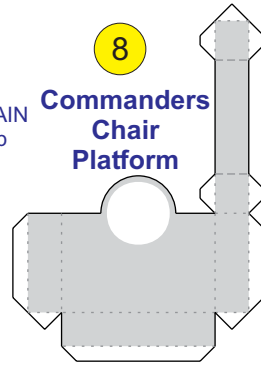
6 Command Module Pedestal



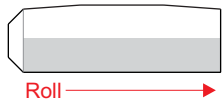
7 Platform Support



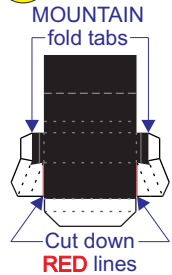
8 Commanders Chair Platform



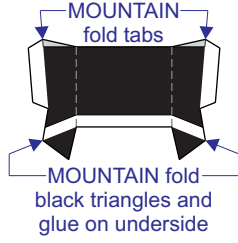
9 Commanders Chair Column



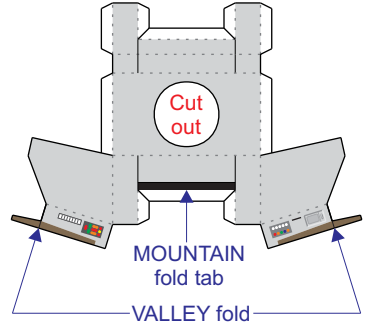
22 Seat Back



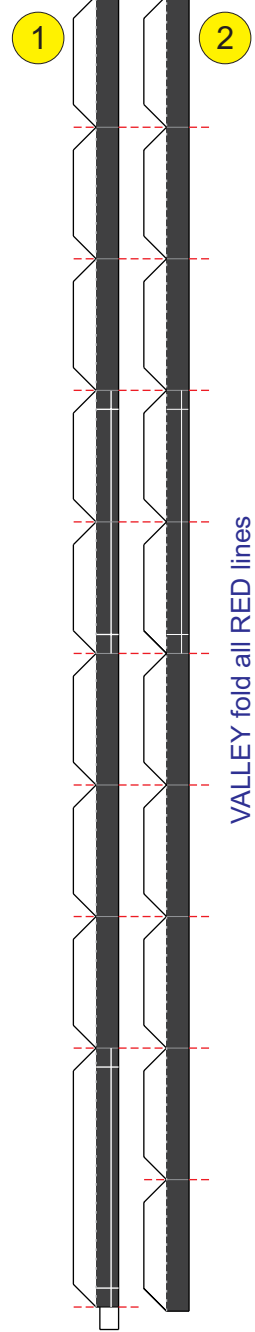
21 Seat Bottom



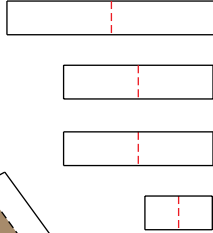
20 Commanders Chair



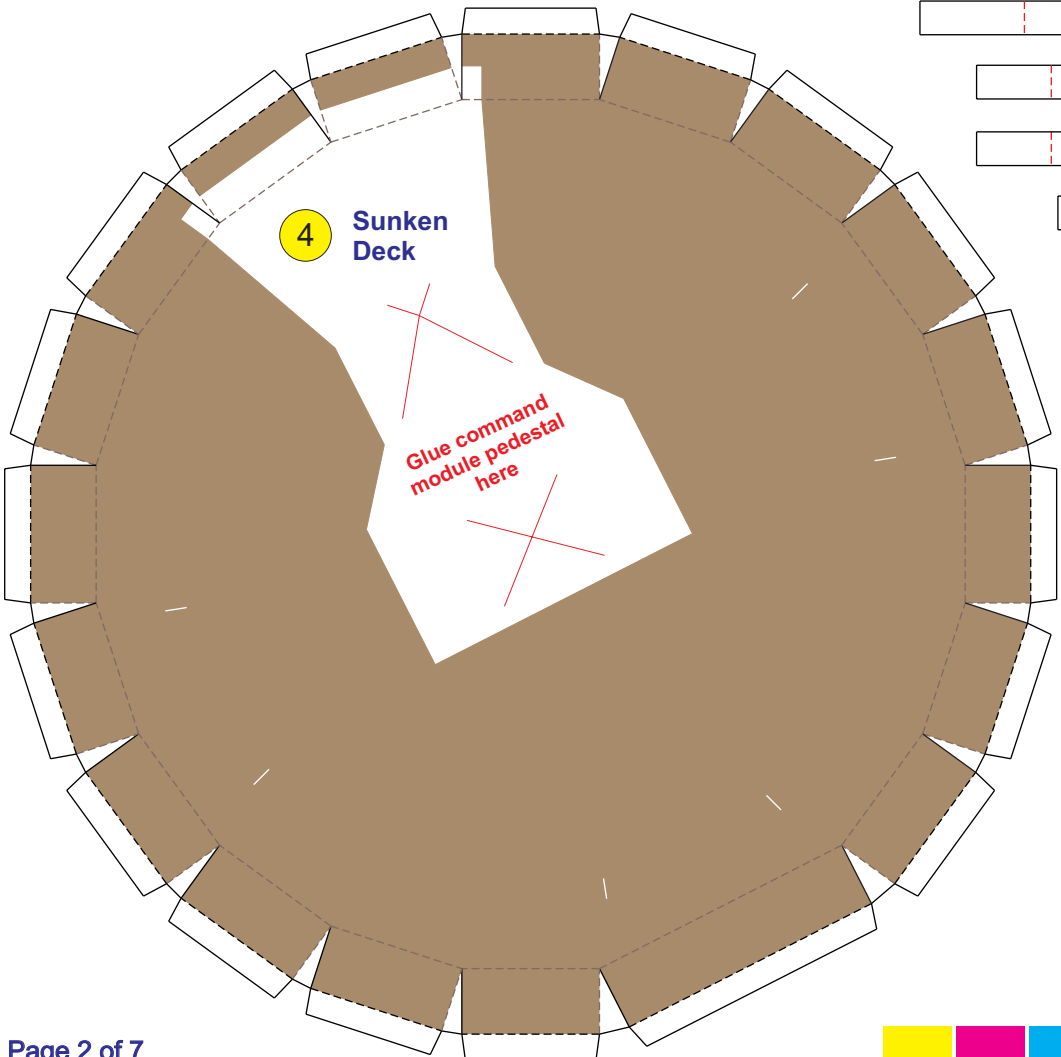
Bridge Deck Inside Edge



5 Pedestal Supports



4 Sunken Deck



USS ENTERPRISE BRIDGE (NCC-1701)

1:50 Scale Model design by Ron Caudillo (ronalcaudillo@yahoo.com)

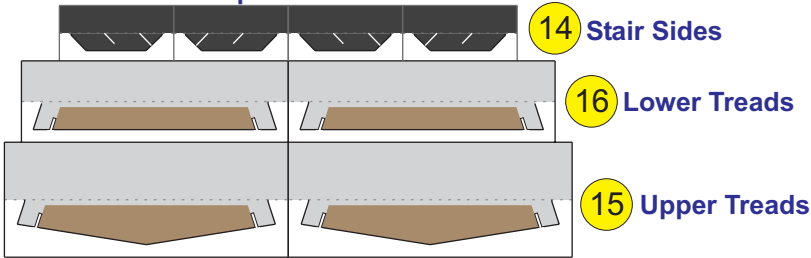
Valley Fold -----
 Mountain Fold - - - - -

Centimeters

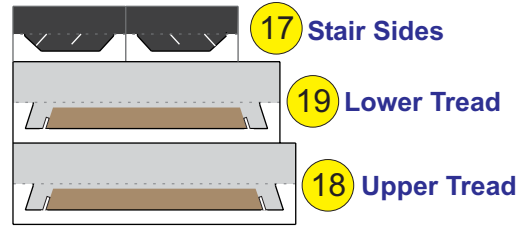
Inches

Centimeters

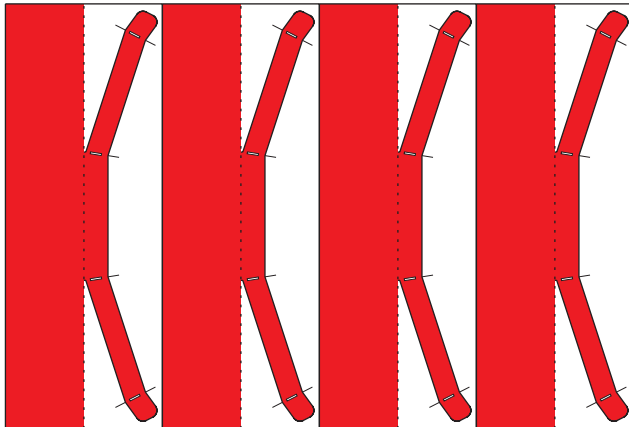
Steps on Sides



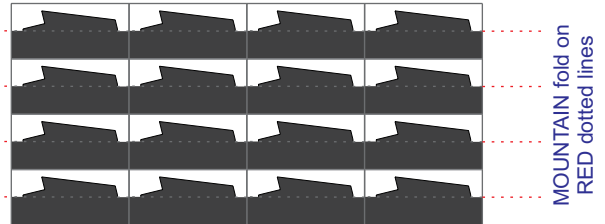
Viewer Area Stairs



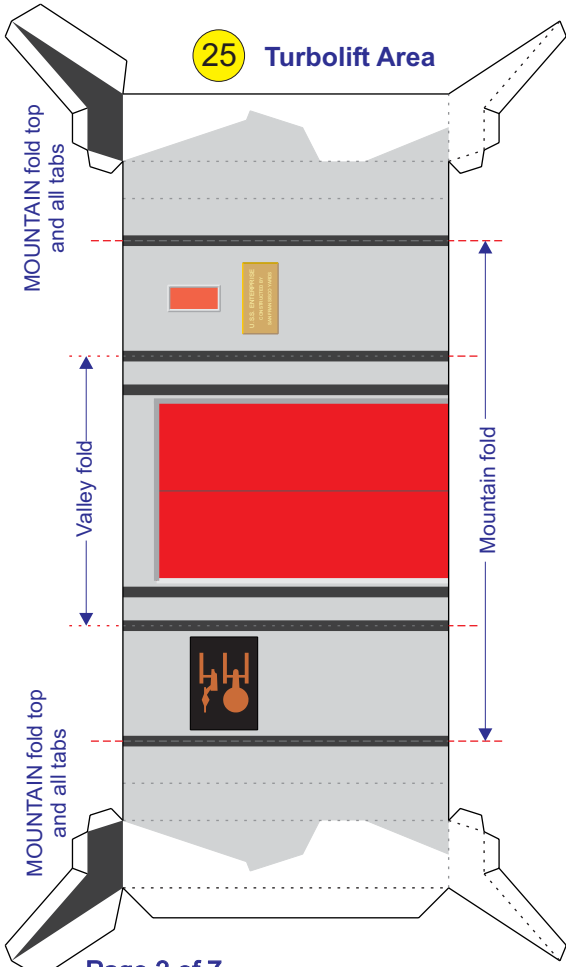
24 Raised Deck Railing



23 Raised Deck Railing Supports

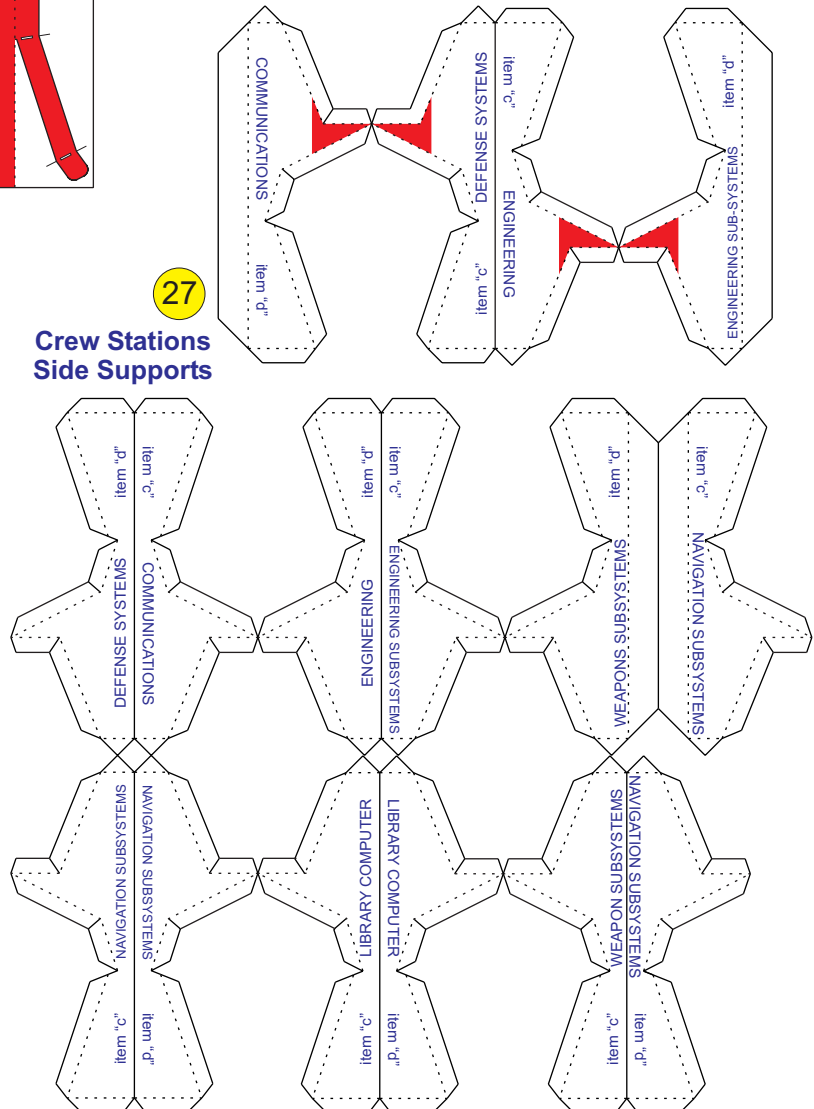


25 Turbolift Area



27

Crew Stations Side Supports



USS ENTERPRISE BRIDGE (NCC-1701)

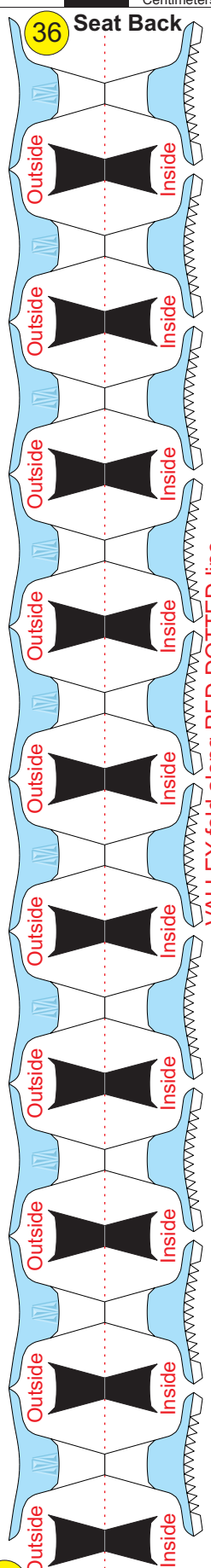
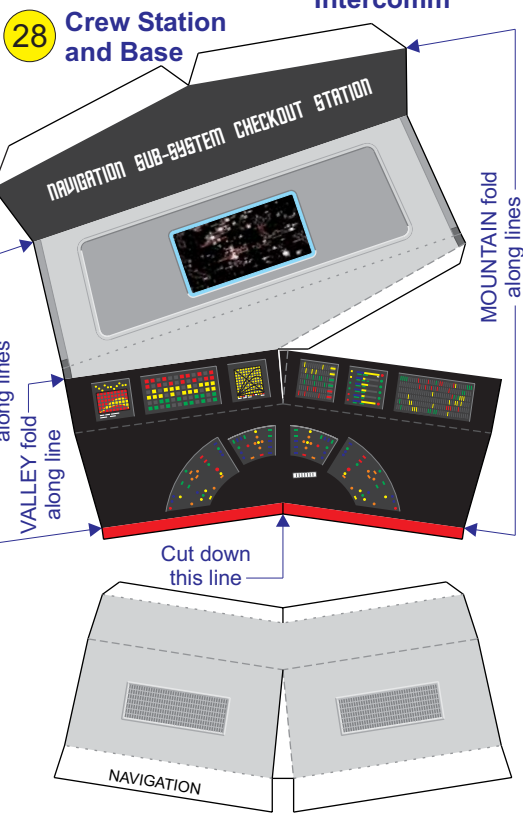
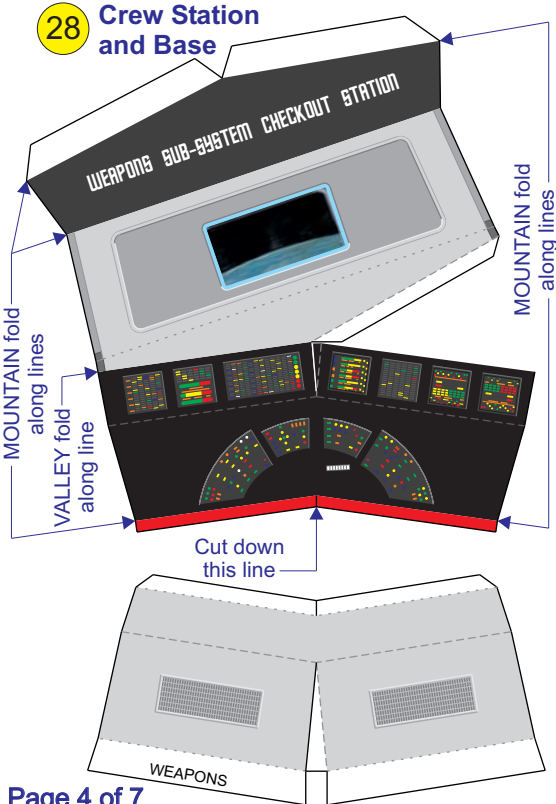
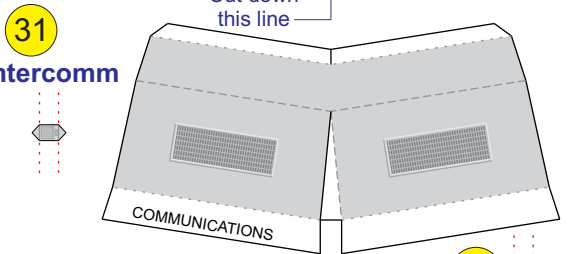
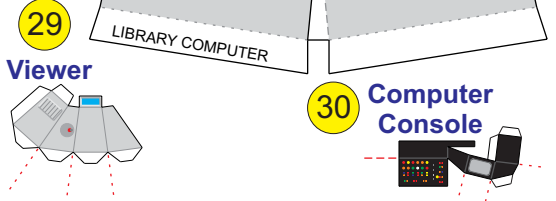
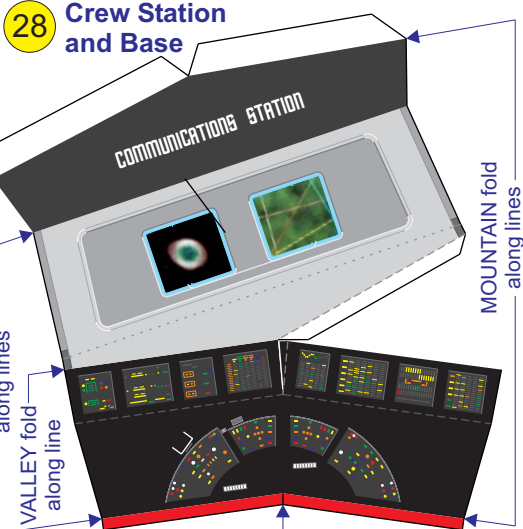
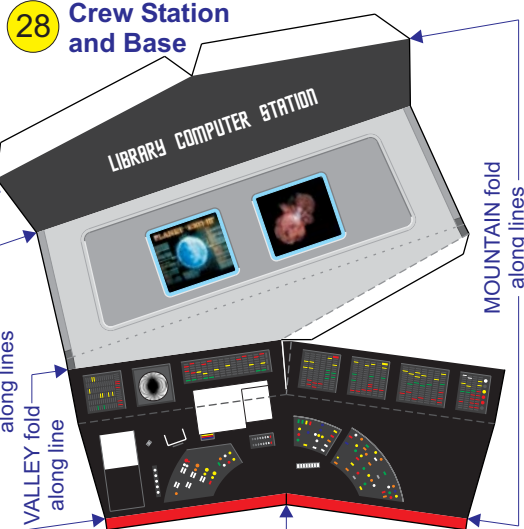
1:50 Scale Model design by Ron Caudillo (ronalddcaudillo@yahoo.com)

Valley Fold - - - - -
Mountain Fold - - - - -

Centimeters

Inches

Centimeters



Inches

USS ENTERPRISE BRIDGE (NCC-1701)

1:50 Scale Model design by Ron Caudillo (ronalddcaudillo@yahoo.com)

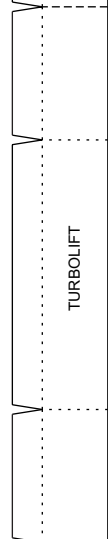
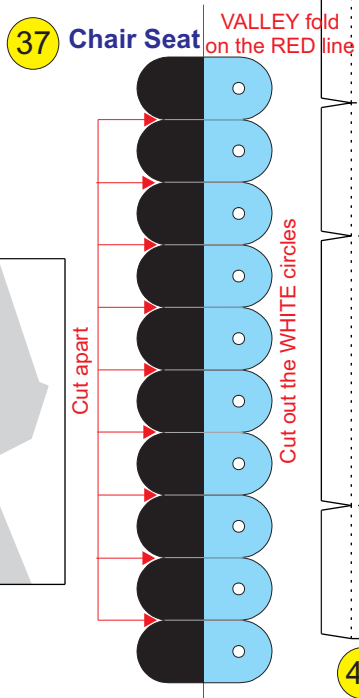
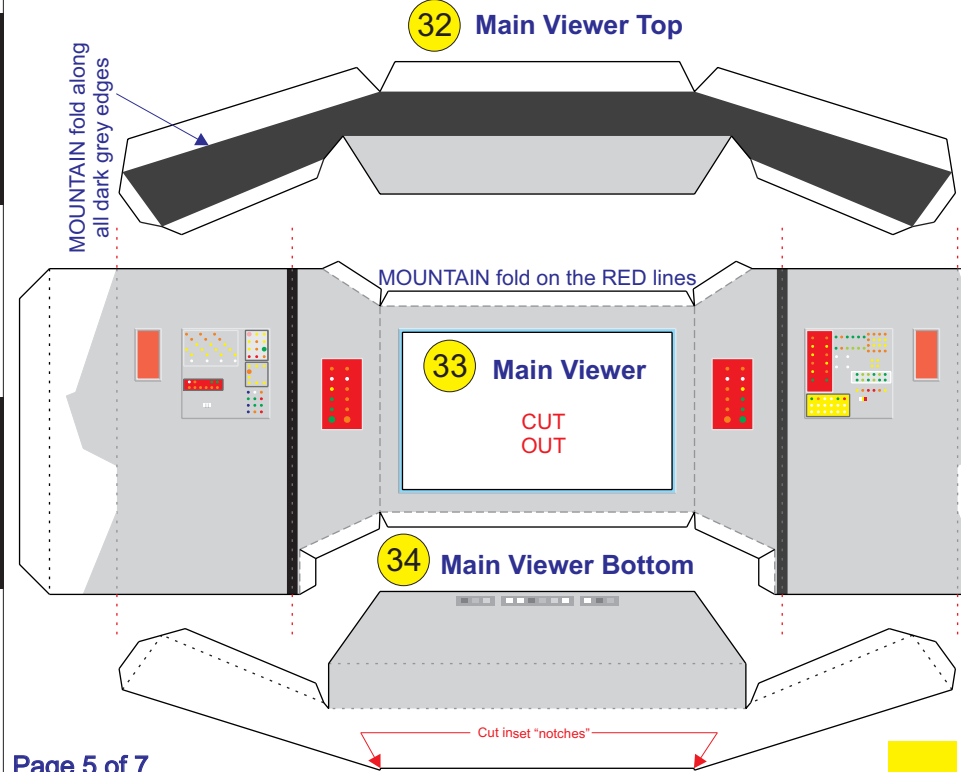
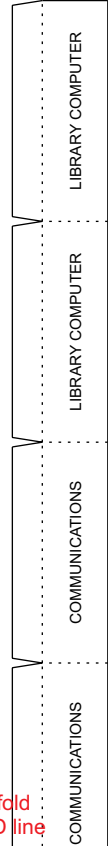
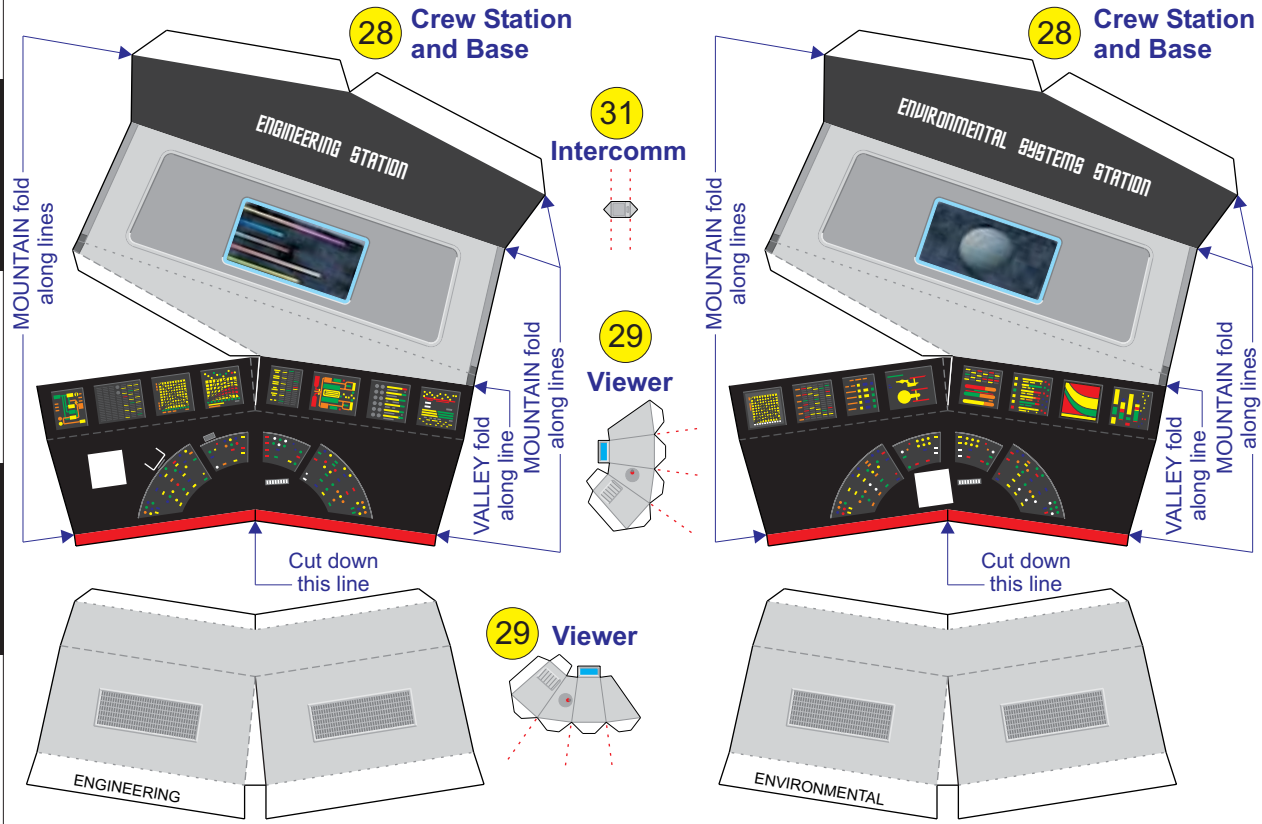
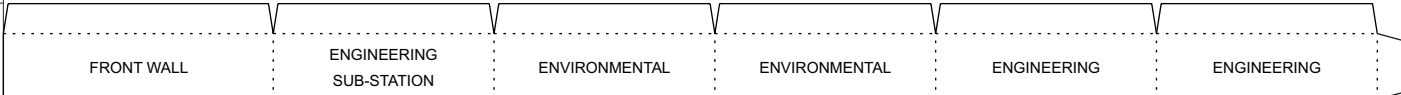
Valley Fold -----
Mountain Fold - - - - -

Centimeters

Inches

Centimeters

42 DECK EDGE SUPPORT



41

DECK EDGE SUPPORT

Inches

NAVIGATION NAVIGATION WEAPONS WEAPONS DEFENSE FRONT WALL

USS ENTERPRISE BRIDGE (NCC-1701)

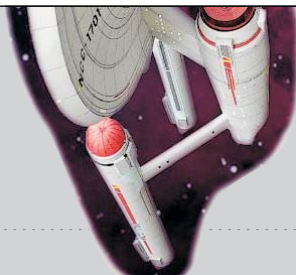
7:50 Scale Model design by Ron Caudillo (ronalcaudillo@yahoo.com)

Valley Fold
Mountain Fold

DECK EDGE SUPPORT 40

43 Outer Wrap

45 Outer Wrap



Space... The final

NAVIGATION

NAVIGATION


LIBRARY COMPUTER

LIBRARY COMPUTER

COMMUNICATIONS

COMMUNICATIONS

CUSTOM MODELS
 Ron Caudillo
 Lodi, New Jersey
 ronalcaudillo@yahoo.com



44 Outer Wrap



STAR TREK

USS ENTERPRISE BRIDGE

Model design by Ron Caudillo

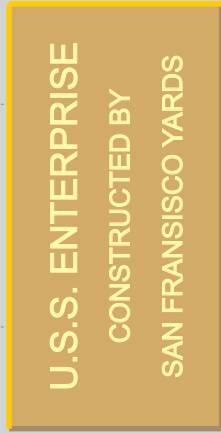
frontier. These are the voyages of the starship, Enterprise. Its five year mission: to explore strange, new worlds. To seek out new

MAIN VIEWING SCREEN

WEAPONS

WEAPONS

DEFENSE



U.S.S. ENTERPRISE
 CONSTRUCTED BY
 SAN FRANCISCO YARDS

life, and new civilizations. To boldly go where no man has gone before...

TURBOLIFT

ENGINEERING

ENGINEERING

ENVIRONMENTAL

ENVIRONMENTAL

ENGINEERING SUB-STATION

35 Main Viewer Display

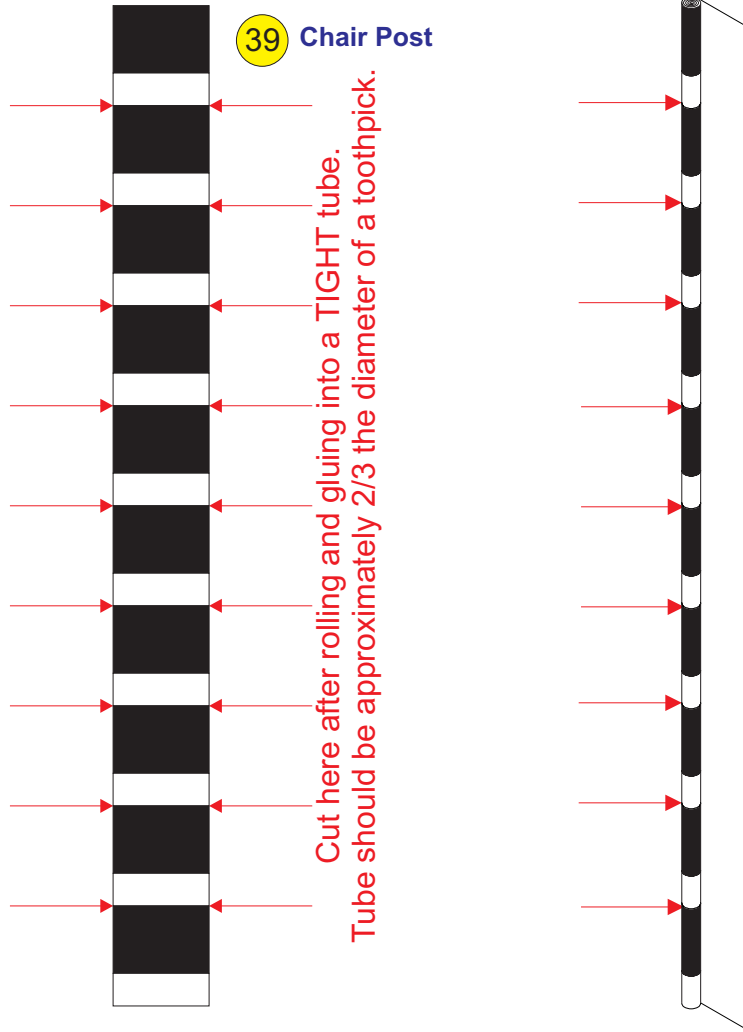
Fold white tabs UP and glue to rear of main viewer cutout

STAR TREK



Print this page on normal BOND TYPING PAPER

39 Chair Post



Glue the BLACK end of each rolled section to the bottom of each seat bottom of the assembled chair. Let dry, glue and insert each seat assembly into a hole cut into the floor at each crew station.

